

REVISIONS	DATE
(1)	08/12/09
AS BUILT	09/28/09

SHEET CONTENTS:
FLOOR PLAN

HOLD SHOWER FLUSH TO INSIDE ROOM FIR WALL BEHIND TO ACCOMMODATE

PLENUM NOTES:
 1. LINE PLENUM WALLS W/ MIN. 1/2" GYPSUM.
 2. LINE PLENUM FLOOR W/ GALVANIZED SHEET METAL OR EQ.
 3. NO EXPOSED WOOD IN R/A OPENING.
 4. NO EXPOSED WOOD ABOVE T-GRID.
 5. SEAL ALL PENETRATIONS INTO PLENUM W/ APPROVED FIRE RATED SEALANT.
 6. WRAP ALL ABS ABOVE T-GRID W/ APPROVED FIRE WRAP.

FRAMING

- FRAME: 12" I-BEAM, OUTRIGGER TYPE, DETACHABLE HITCH, 4-AXLE, (8) 12 PLY TIRES
- FLOOR: JOISTS: 2X8 @ 16" O.C.; INSULATION: R-19 UNFACED FIBERGLASS; FLOOR BOTTOM: 40 MIL PLASTIC; DECKING: 3/4" T&G PLYWOOD EQ; MUST BE GLUED & SCREWED;
- ROOF: PITCHED: 4/12 SLOPE PRE-MANUFACTURED WOOD TRUSS @ 24" O.C. (VERIFY); INSULATION: R-30 UNFACED FIBERGLASS; SHEATHING: 5/8" OSB/EQ; ROOF BOTTOM: MIN 1/2" GYP.
- WALLS: EXTERIOR: 2X6 @ 16" O.C.; INTERIOR: 2X4 @ 16" O.C.; INSULATION: EXTERIOR R-19 UNFACED FIBERGLASS INTERIOR: R-11 UNFACED FIBERGLASS PLATES: TOP: DOUBLE 2X; BOTTOM: SINGLE 2X.
- RETURN AIR: 24"X24" GRILLS IN CEILING; CEILING PLENUM TO PLENUM MALL (TOTAL: 3). NOTE: SEE SHEET 2 FOR DETAILS.
- ROOF VENTILATION: 9" X 9" TURTLE VENT (TOTAL: 6). CONTINUOUS SOFFIT VENTILATION (SEE SHEET 4).

FINISHES

- EXTERIOR
 WALLS: INSULATION: R-19 UNFACED FIBERGLASS; SHEATHING: 1/16" OSB/EQ. SIDING: 24-GA. WIDE RIB STEEL OVER HOUSEWRAP (COLOR: MCCI SADDLE TAN). TRIM: 24-GA. STEEL (COLOR: MCCI SADDLE TAN). ROOF: SHEATHING: 5/8" OSB/EQ. ROOFING: 26-GA. 5L-16' STANDING SEAM METAL OVER ONE (1) ROW ICE & DAM SHIELD W/ #30 FELT ON REMAINDER (COLOR: MCCI RUSTIC RED).
- INTERIOR
 FLOOR: ROLLGOODS: 85-MIL SHEET VINYL W/ WELDED SEAMS (COLOR: DOMCO "INFLUENCE" #52028). WALLS: SHEATHING: 1/16" OSB/EQ; FINISH: FULL HEIGHT FLOOR/CEILING "WHITE" FRP; INSULATION: R-11 UNFACED FIBERGLASS; MOLDINGS: 1-1/2" X 1-1/2" STAINLESS W/ FRP CAP TRIM AROUND WINDOWS & EXTERIOR DOOR; FRP COMPATIBLE REMAINDER. BASE MOLDING: NAFCO 4" VINYL COVE (COLOR: GREY). CEILING: T-GRID SUSPENDED CEILING SYSTEM @ 45" AFF. SEE SHEET 3.

WINDOWS AND DOORS

- EXTERIOR DOORS: (A) 3068 18-GA STEEL DOOR IN 16-GA KD STEEL JAMB, WEATHERSTRIP, TRESHOLD, 'LCN' 4041 CLOSURE, DRIP CAPS. (COLOR: TO MATCH SIDING) (TOTAL: 1).
 HARDWARE: KEYED LEVER W/ KEYED DEADBOLT (TOTAL: 1).
- INTERIOR DOORS: 3068 SC LEGACY OAK W/ "BROWNTONE" TIMELY STEEL FRAMES, & WALL MOUNTED DOOR STOPS (TOTAL: 2).
 HARDWARE: (1) PUSH-PULL, CLOSURE & KICKPLATES (TOTAL: 1). (2) "SCHLAGE" LEVER KEYED LOCKSET (TOTAL: 1).
- WINDOWS: (1) 4010 'AMSCO' 'WHITE' VINYL FRAME, H5, W/ INSULATED OBSCURE GLASS & INSECT SCREEN (TOTAL: 4).
- BLINDS: N/A

CABINETRY & APPLIANCES

- COAT HOOKS: (TOTAL: 40).
- BENCHES: 12" DEEP @ 16" AFF; WHERE SHOWN: 2X12S SEALED W/ METAL SUPPORT FEET.
- WATER HEATER: SEE SHEET 2.

SKIRTING

- PROVIDE 148 LF. OF 36" TALL SKIRT SHEETS TO MATCH SIDING

AJIU-1464-4068

GENERAL NOTES -- MONTANA --

- CODES: 2006 IBC, 2006 IMC, 2006 UPC, 2005 NEC, 2006 IECC.
- OCCUPANCY: E DIVISION:
- CONSTRUCTION TYPE: Y-B USEABLE SQ. FT.: 840
- OCCUPANCY LOAD: 42
- HANDICAP REQUIREMENTS: ANSI A117.1-2003
- DESIGN LOADS: LIVE FLOOR: 50 LBS/SQ. FT./2000# CONC.
 EXIT WAY: N/A LBS/SQ. FT.
 LIVE ROOF: 50 LBS/SQ. FT.
 WIND: 25 LBS/SQ. FT.
 GROUND SNOW: 11 LBS/SQ. FT.
 SEISMIC DESIGN: D2
- ELECTRICAL SYSTEMS: AS SHOWN
- PLUMBING SYSTEMS: AS SHOWN
- MECHANICAL SYSTEMS: AS SHOWN
- ADA CODES REQUIRE ACCESSIBILITY FOR THE PHYSICALLY CHALLENGED. ACCESSIBILITY IS THE RESPONSIBILITY OF THE LOCAL USER. ANY RAMP STRUCTURE SHOULD BE APPROVED BY THE LOCAL BUILDING AUTHORITY.
- STATE INSPECTIONS: (3RD. PARTY) ICC CERTIFIED.

APPROVED BY: _____
 AS IS: W/CHANGES:
 DATE: _____

NOTE: UNAUTHORIZED USE OF THIS ADVANCED MODULAR MANUFACTURING PLAN, OR MAKING COPIES OF THIS PLAN, IS PROHIBITED BY LAW. WRITTEN PERMISSION FROM ADVANCED MODULAR MANUFACTURING IS REQUIRED TO REPRODUCE ANY PART OF THIS PLAN.

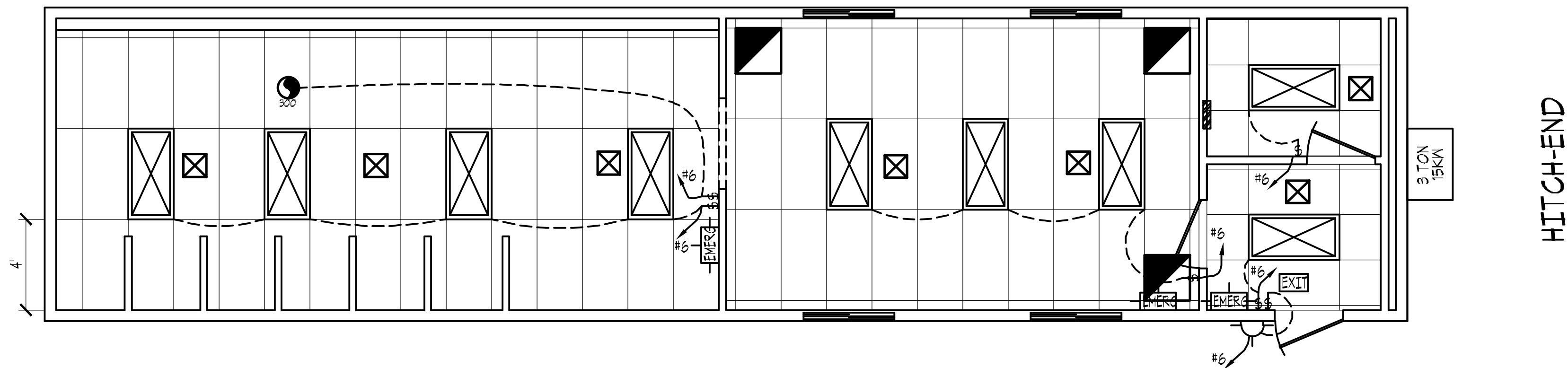
PROJECT TITLE:
 14' X 60'
 SHOWER/CHANGE BUILDING
 HUNTLEY PROJECT SCHOOLS
 PRESENTED BY:
 US MODULAR, BOZEMAN MT.

ADVANCED MODULAR MANUFACTURING
 644 WEST 14600 SOUTH
 BLUFFDALE, UTAH, 84065
 PH. (801) 571-9841
 FAX (801) 571-9883
 DRAWN BY: D. EDGINTON
 CHECKED BY: THE GHOST

DATE:
 JULY 23, 2009
 SHEET
 1 of 5
 USMOD1460HUNTLEY

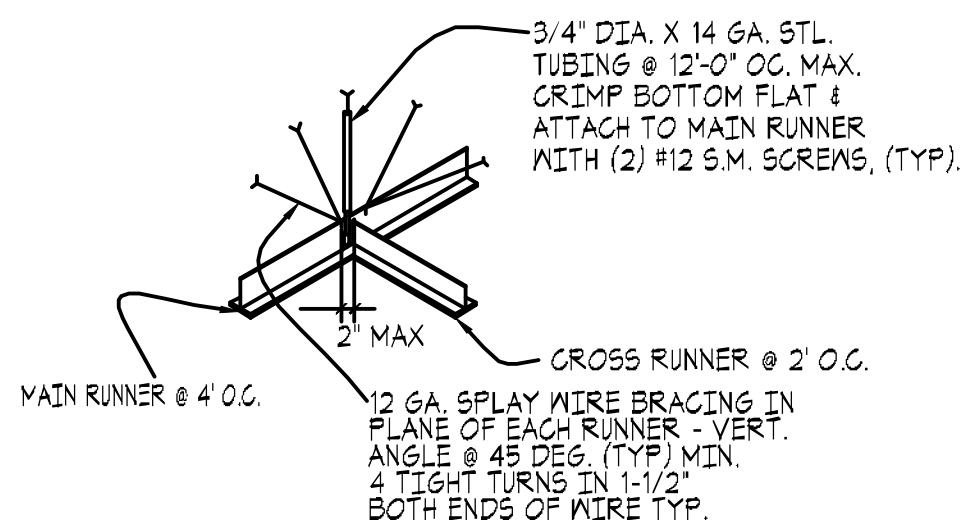
SCALE:
 1/4"=1'

FLOOR PLAN



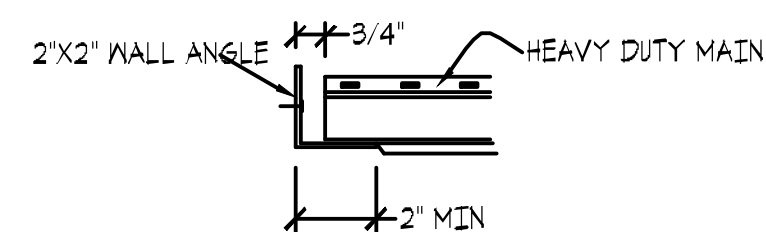
REFLECTED CEILING SPECIFICATIONS

1. REFLECTED CEILING TO CODES LISTED ON SHEET 1.
2. TYPICAL 2' X 4' SUSPENDED T-GRID PATTERN.
3. 2' X 4' ACOUSTICAL CEILING TILES; 'CERTAINTED' 'BAROQUE' #BET-191/EQ;
2' X 4' VINYL FACED CEILING TILES ABOVE SHOWERS; 'CERTAINTED' 'VINYLSHEILD A' #1100-CRFR1.
4. SUSPEND 1/8" MEDIUM DUTY OR BETTER TRACK W/ #12 GAUGE WIRE.
5. BRACE TRACK PER SEISMIC ZONE D2.
6. LIGHTS TO BE MECHANICALLY FASTENED TO T-GRID W/ SCREWS - PROVIDE ONE (1) PER END OF FIXTURE; & HAVE TWO (2) LIGHT WIRES INDEPENDANT OF T-GRID PROVIDE ONE (1) AT OPPOSITE CORNERS OF EACH LIGHT.
7. FINISH CEILING -EIGHT: #5" AFF.
8. 2'X4' 2-TUBE (64" MAX TOTAL) T-8 FLUORESCENT.
LAY IN TROPHYER W/ ELECTRONIC BALLASTS & DIFFUSERS. (TOTAL: 9).
9. PORCH LIGHT:
 FACTORY STANDARD VANDAL-RESISTANT INCANDESCENT TYPE (60 W MAX) (TOTAL: 1).
10. EMERGENCY LIGHT:
 WALL MOUNT DUO-LIGHT W/ BATTERY BACK-UP (TOTAL: 3).
CONNECT TO NEAREST HOT LIGHTING CIRCUIT.
11. EXIT LIGHT:
 CEILING MOUNT, ELECTRIC ILLUMINATED W/ BATTERY BACK-UP (TOTAL: 1).
CONNECT TO NEAREST HOT LIGHTING CIRCUIT.
12. EXHAUST FAN:
 SEE EX-AUST FAN SPECS SHEET 2.
13. HIDDEN LINE DENOTES SWITCHING.



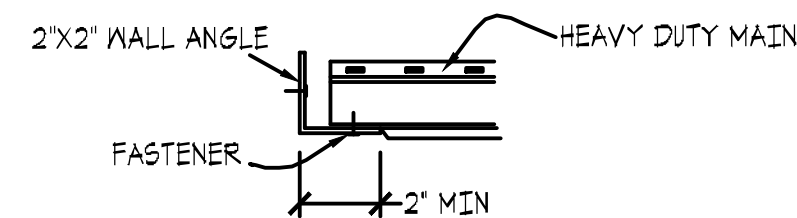
SEISMIC CONNECTION

-- SCALE: NONE --



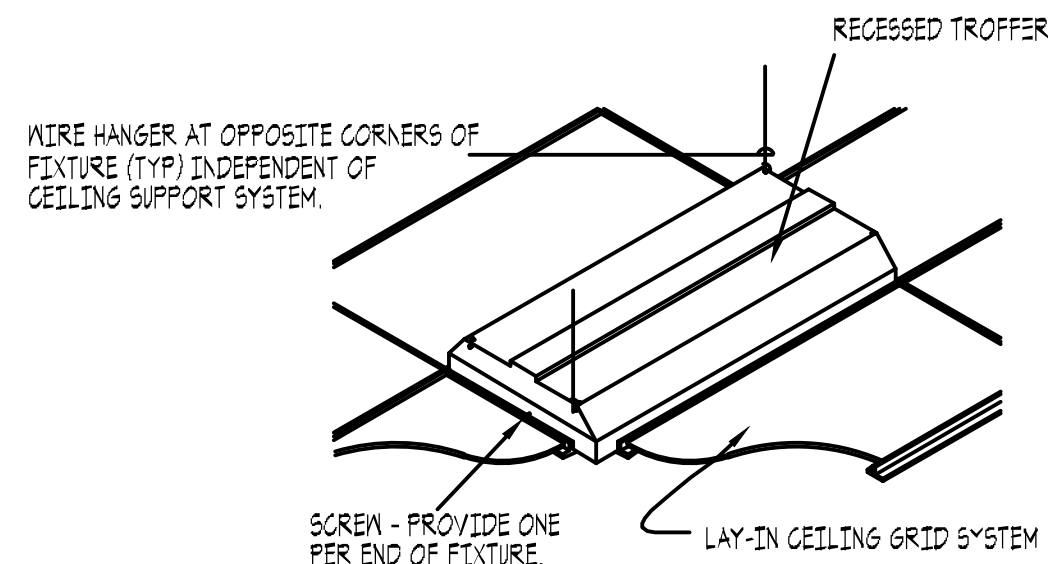
FREE-END PERIMETER CONNECTION

-- SCALE: NONE --



RIGID PERIMETER CONNECTION

-- SCALE: NONE --



RECESSED FIXTURE MOUNTING DETAIL

-- SCALE: NONE --

SCALE:
1/4"=1'

CEILING PLAN

APPROVED BY:

AS IS: W/CHANGES:

DATE:

NOTE: UNAUTHORIZED USE OF THIS ADVANCED MODULAR MANUFACTURING PLAN, OR MAKING COPIES OF THIS PLAN, IS PROHIBITED BY LAW. WRITTEN PERMISSION FROM ADVANCED MODULAR MANUFACTURING IS REQUIRED TO REPRODUCE ANY PART OF THIS PLAN.

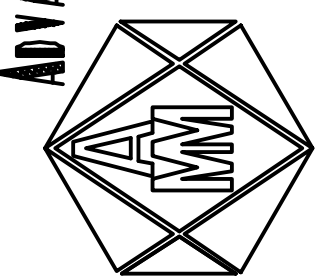
REVISIONS	DATE
(1)	08/12/09

SHEET CONTENTS:

CEILING PLAN

PROJECT TITLE:
14' X 60'
SHOWER/CHANGE BUILDING
HUNTLEY PROJECT SCHOOLS
PRESENTED BY:
US MODULAR, BOZEMAN MT.

ADVANCED MODULAR MANUFACTURING
644 WEST 14600 SOUTH
BLUFFDALE, UTAH, 84065
PH: (801) 571-9841
FAX (801) 571-9883
DRAWN BY: D. EDGINTON
CHECKED BY: THE GHOST



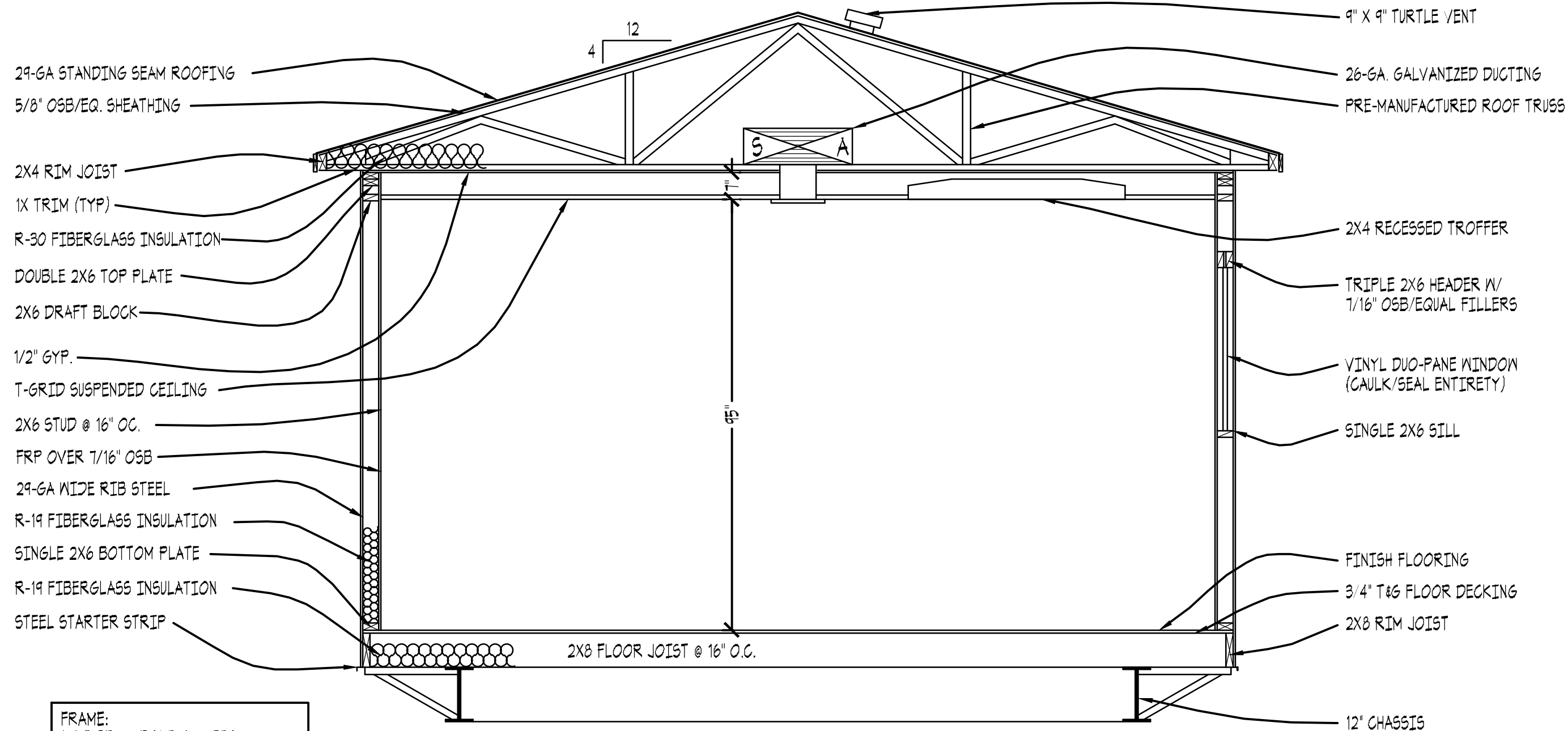
DATE:

JULY 23, 2009

SHEET

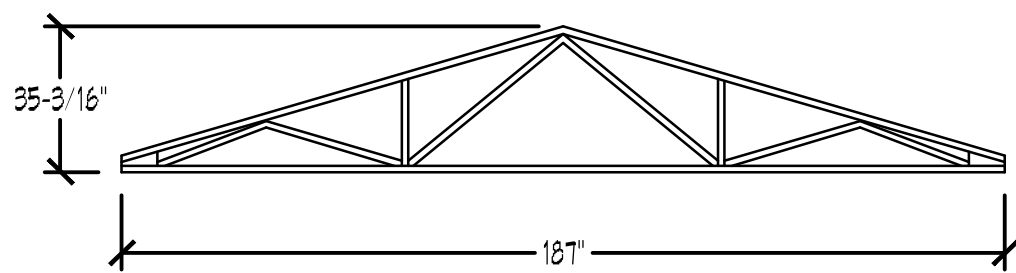
3 of 5

USMOD1460HUNTLEY

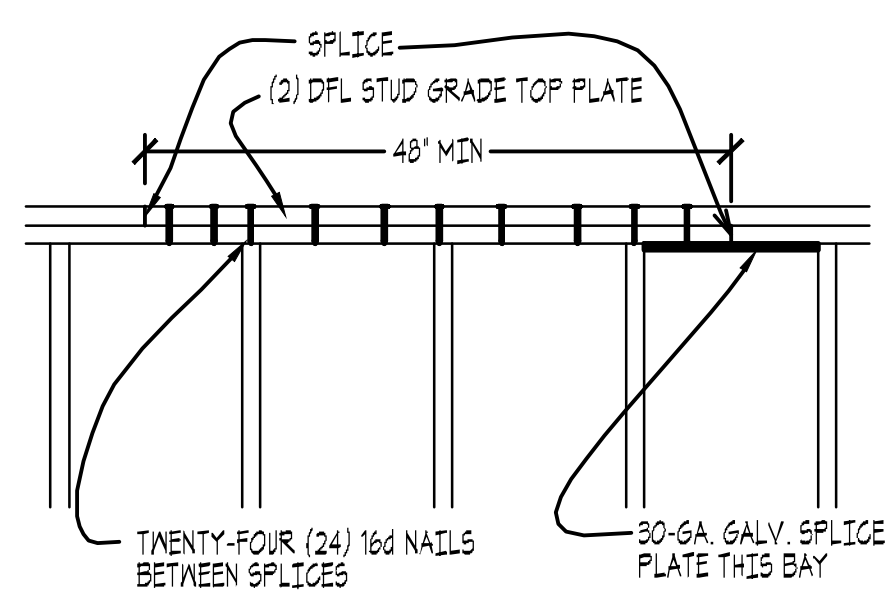


FRAME:
12' I-BEAM, BOLT-ON HITCH
1-1/2" CROSSMEMBER @ 8'-0" OC.
1-1/2" OUTRIGGER @ 4'-0" OC.

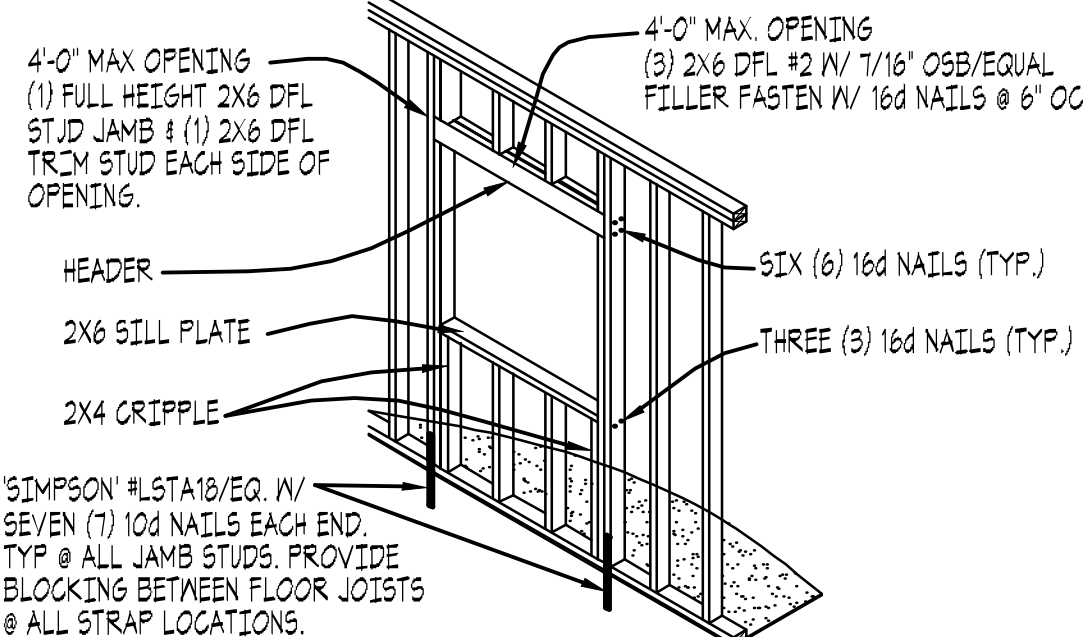
CROSS SECTION



TRUSS DETAIL



DOUBLE PLATE SPLICE DETAIL

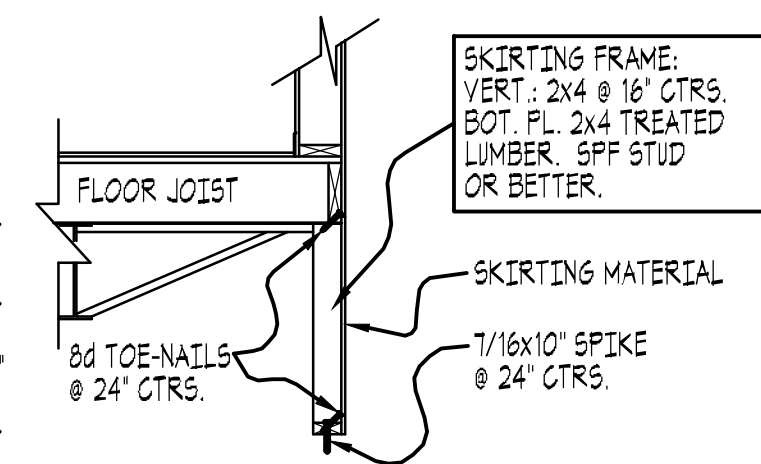


OPENING FRAMING DETAIL

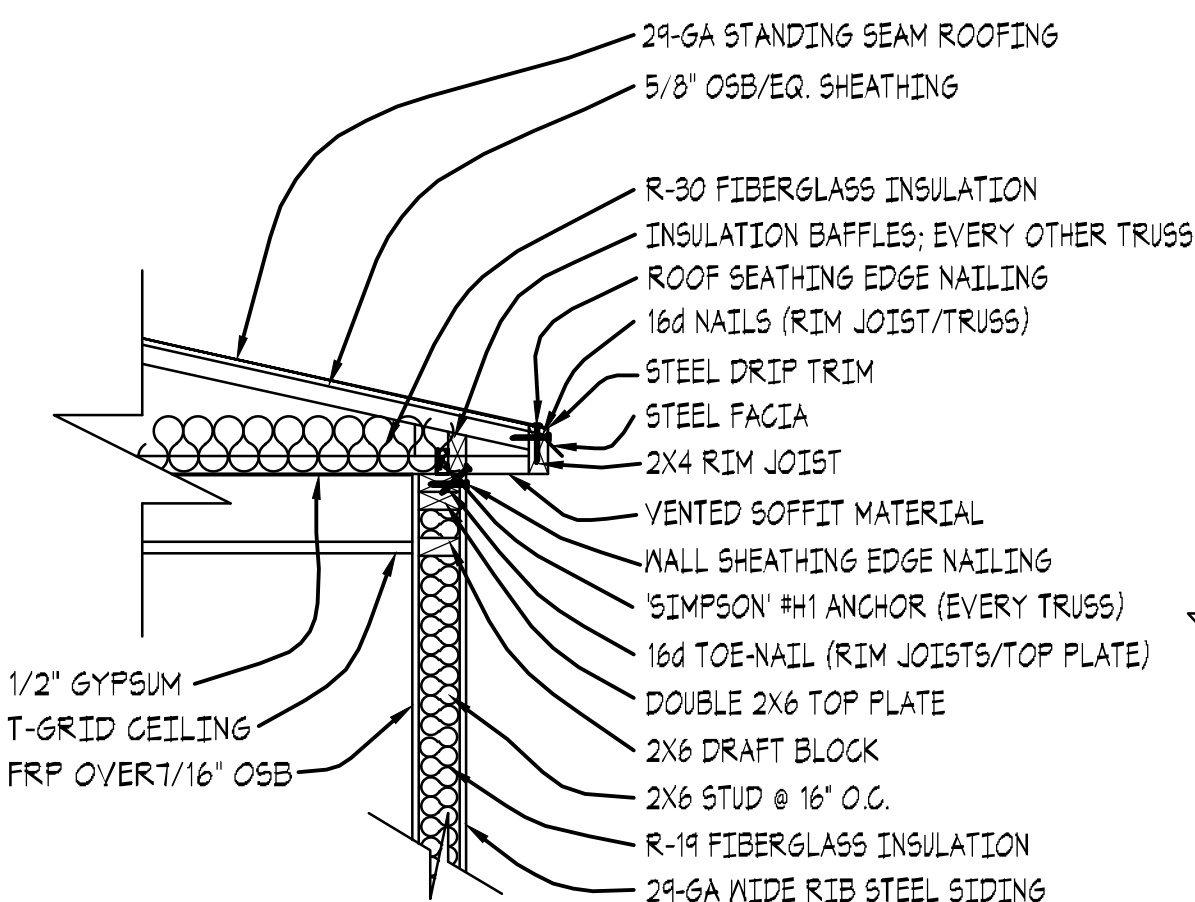
FASTENING SCHEDULE		
CONNECTION	FASTENING	SPACING
FLOORS		
1. FLOOR JOIST TO FRAME	3/8" X 3" LAG SCREW	32" OC
2. RIM JOIST TO FLOOR JOIST	4 EACH 16d NAIL	6" OC
3. DOUBLE RIM JOIST TO FLOOR JOIST	4 EACH 16d NAIL	6" OC
4. 40-MIL CLASS "A" VAPOR BARRIER	1-1/2" X 16-GAUGE STAPLE	8" OC
5. FLOOR DECK TO FLOOR JOIST	8d SCREW SHANK NAIL	6" OC FIELD, 6" OC EDGES
WALLS		
1. BOTTOM PLATE TO FLOOR	2 EACH 16d NAT.	6" OC
2. STUD TO BOTTOM PLATE	16d NAT., EXT: 3 EACH; INT: 2 EACH	
3. TOP PLATE TO STUD	16d NAT., EXT: 3 EACH; INT: 2 EACH	
4. DOUBLE TOP PLATE TO STUD	2 EACH 16d NAT.	6" OC
5. TOP PLATE LAP & INTERSECTION	16d NAT., EXT: 3 EACH; INT: 2 EACH	
6. HEADER W/ T.L.R.	2 EACH 16d NAT.	6" OC EDGES
7. SILL TO STUD	2 EACH 16d NAT.	
8. STUD TO HEADER	EXT: 3 EACH 16d NAIL/EACH 2X6; INT: 2 EACH 16d NAIL/EACH 2X4	
9. SILL TO STUD	EXT: 3 EACH 16d NAIL; INT: 2 EACH 16d NAIL	
10. INTERIOR SHEATHING TO STUD	8d GALVANIZED NAIL, 5/8" STAPLE	6" OC FIELD, 6" OC EDGES
11. INTERIOR PANEL TO STUD	FRP ADHESIVE	AS PER MFG.
12. EXTERIOR SHEATHING TO STUD	8d GALVANIZED NAIL, 5/8" STAPLE	6" OC FIELD, 6" OC EDGES
13. EXTERIOR SIDING TO STUD	COMPA T.B.E W/ SIDING	PER MFG. SPECS
14. 1X TRIM TO EXTERIOR SIDING	8d GALVANIZED NAIL	6" OC FIELD
15. WALL TIE-IN TO FLOOR	EXTERIOR SIDING	
16. INTERIOR TRIM	4d FINISH NAIL	6" OC FIELD
ROOF		
1. RIM JOIST TO TOP PLATE	16d NAT.	6" OC
2. RIM JOIST TO RAFTER	2 EACH 16d NAT.	24" OC
3. CEILING TO RAFTER	#12 WIRE W/ LAG FASTENER	AS PER 2006 IBC
4. ROOF SHEATHING TO RAFTER	8d NAT. OR EQVA. STAPLE	6" OC FIELD, 6" OC EDGES
5. ROOFING TO ROOF	COMPA T.B.E W/ ROOFING	PER MFG. SPECS
6. WALL TIE-IN TO ROOF	EXTERIOR SIDING	
7. ROOF CAP TO ROOF @ MODULE LINE	COMPA T.B.E W/ ROOFING	CONTINUOUS

STRUCTURAL NOTES:

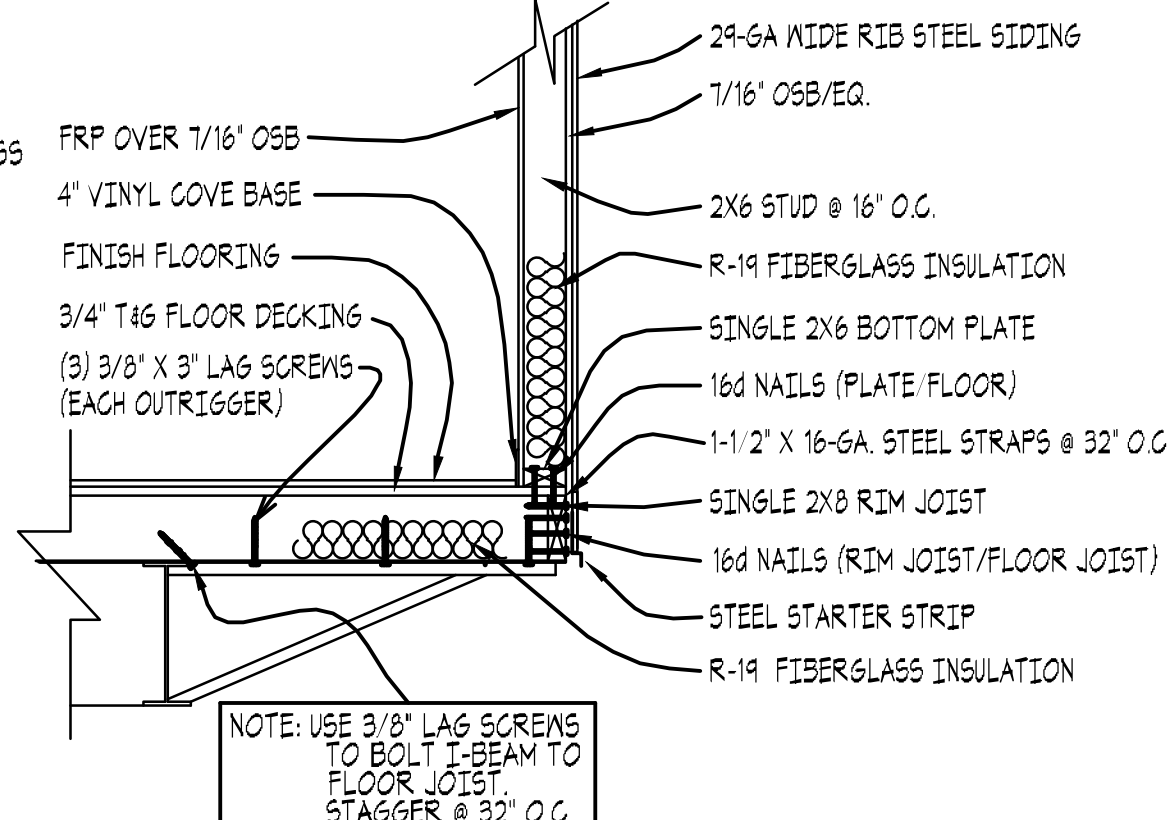
- PREMANUFACTURED ROOF TRUSSES PLACE @ 24" OC.
- STRUCTURAL LUMBER REQUIRED:
 - A. FLOOR JOISTS: 2X8 @ 16" OC
 - B. WALL STUDS: EXT: 2X6 SPF STUD GRADE; INT: 2X4 SPF STUD GRADE; ADDITIONAL 2X6: SPF #2/BETTER. ALL SHEATHING: APA RATED.
 - C. FLOOR DECKING: 3/4" T&G; 24" MINIMUM SPAN INDEX APA RATED;
 - D. WALL SHEATHING: NONE;
 - E. ROOF SHEATHING: 5/8" APA RATED OSB/EQUAL W/ 24" SPAN INDEX
- STRUCTURAL MEMBERS CANNOT BE RIPPED OR ALTERED W/ OUT PRIOR APPROVAL FROM ENGINEER ON RECORD.



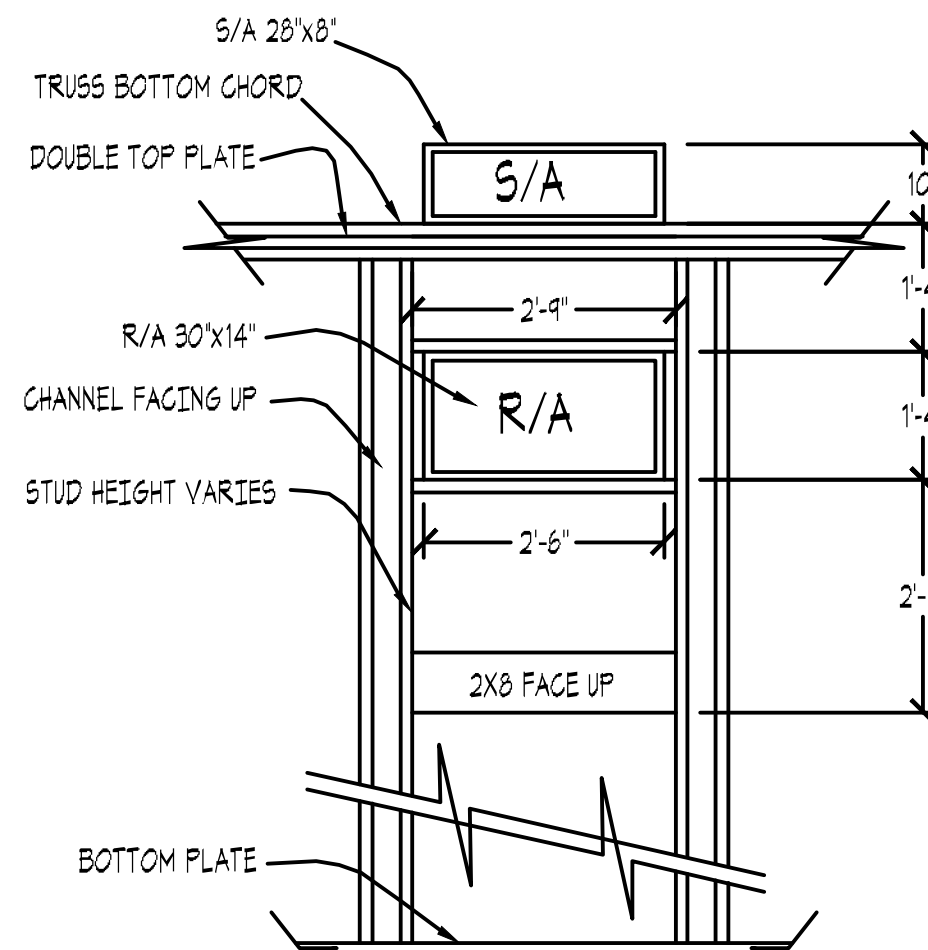
SKIRTING DETAIL



WALL TO ROOF DETAIL



WALL TO FLOOR DETAIL



APPROVED BY: _____
AS IS: W/CHANGES:
DATE: _____

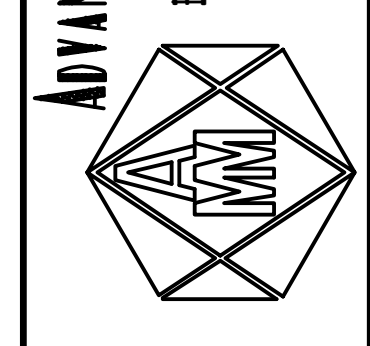
NOTE: UNAUTHORIZED USE OF THIS ADVANCED MODULAR MANUFACTURING PLAN, OR MAKING COPIES OF THIS PLAN, IS PROHIBITED BY LAW. WRITTEN PERMISSION FROM ADVANCED MODULAR MANUFACTURING IS REQUIRED TO REPRODUCE ANY PART OF THIS PLAN.

DATE	REVISIONS
08/12/09	(1)
09/28/09	AS BUILT

SHEET CONTENTS:
CROSS SECTION & DETAILS

PROJECT TITLE:
14' X 60'
SHOWER/CHANGE BUILDING
HUNTLEY PROJECT SCHOOLS
PRESENTED BY:
US MODULAR, BOZEMAN MT.

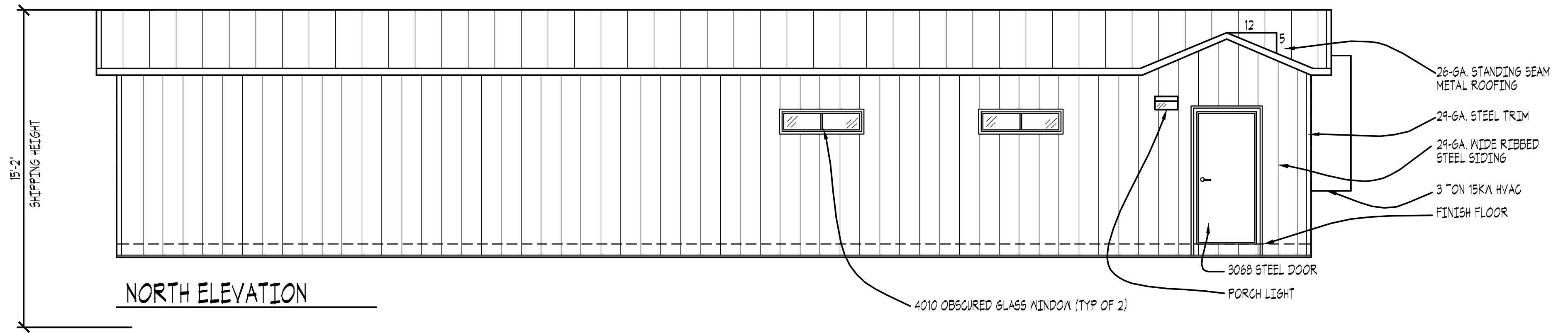
ADVANCED MODULAR MANUFACTURING
644 WEST 14600 SOUTH
BLUFFDALE, UTAH, 84065
PH. (801) 571-9841
FAX (801) 571-9888
DRAWN BY: D. EDGINTON
CHECKED BY: THE GHOST



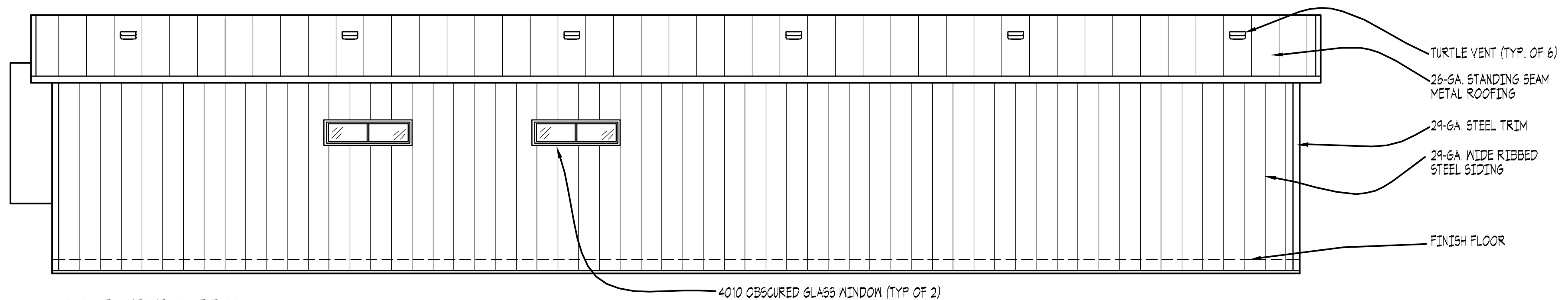
DATE:
JULY 23, 2009
SHEET
4 of 5
U5MOD1460HUNTLEY

SCALE:
NONE

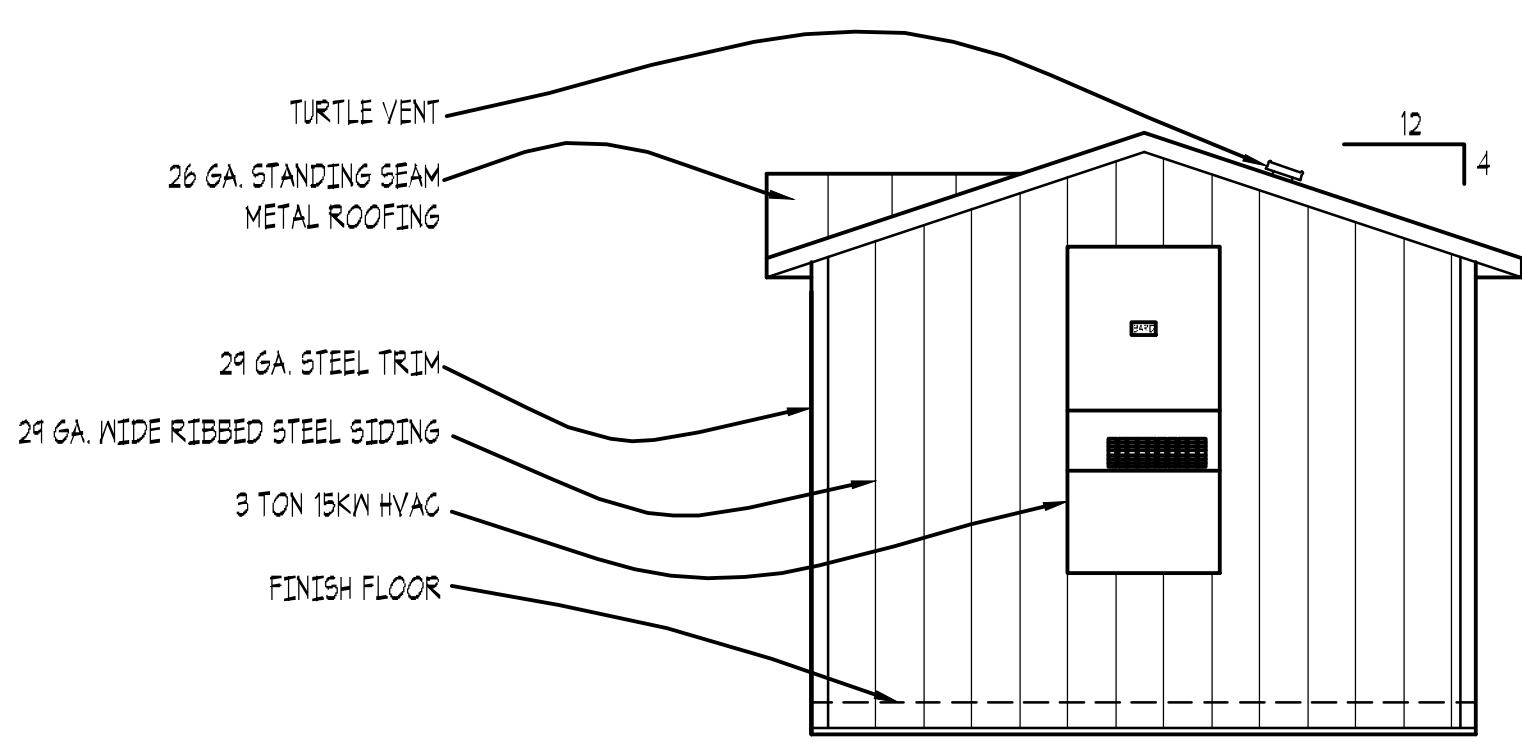
CROSS SECTION & DETAILS



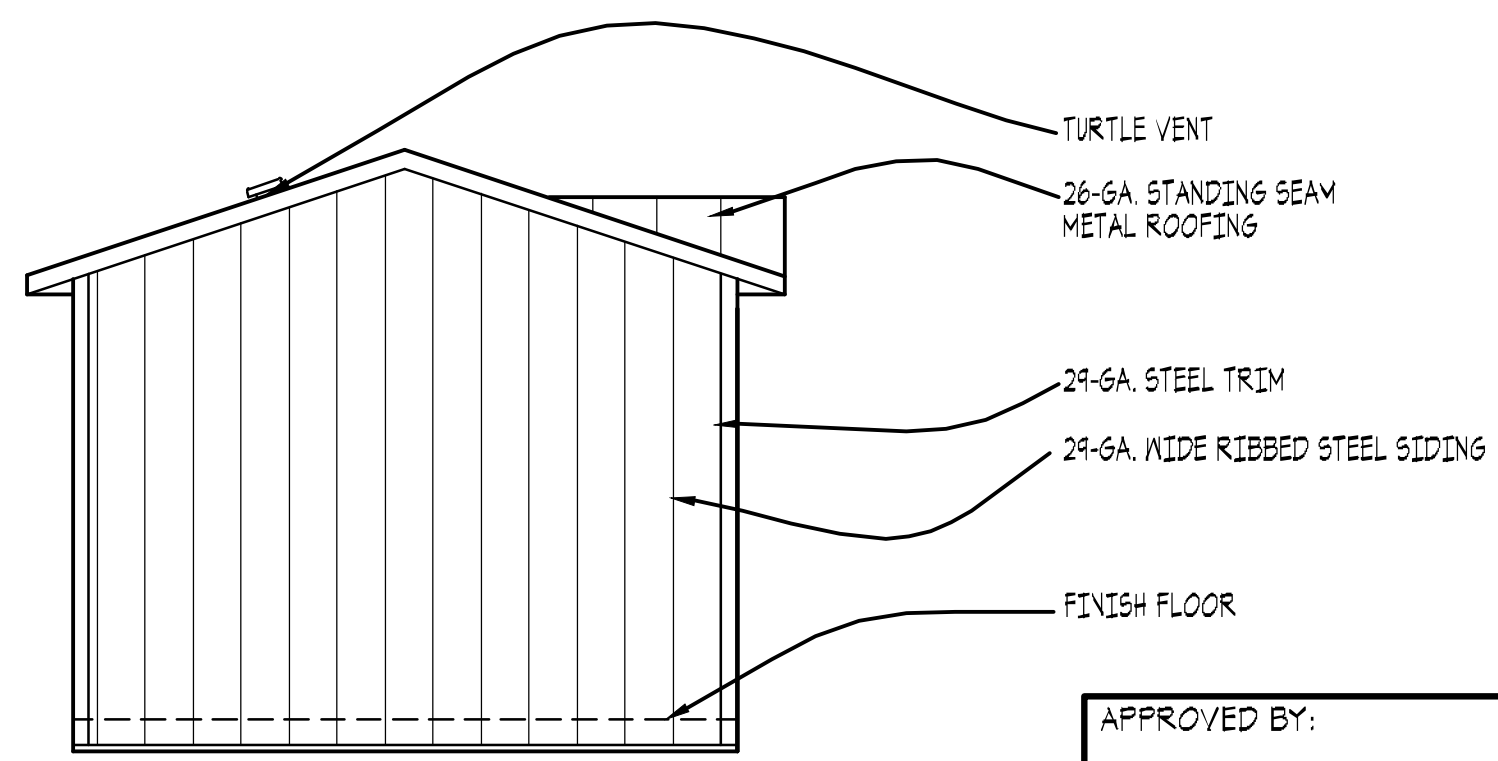
NORTH ELEVATION



SOUTH ELEVATION



EAST ELEVATION



WEST ELEVATION

APPROVED BY: _____

AS IS: W/CHANGES:

DATE: _____

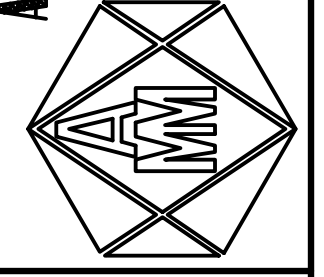
NOTE: JNAUTHORIZED USE OF THIS ADVANCED MODULAR MANUFACTURING PLAN, OR MAKING COPIES OF THIS PLAN, IS PROHIBITED BY LAW. WRITTEN PERMISSION FROM ADVANCED MODULAR MANUFACTURING IS REQUIRED TO REPRODUCE ANY PART OF THIS PLAN.

REVISIONS	DATE

SHEET CONTENTS:
ELEVATIONS

PROJECT TITLE:
**14' X 60'
SHOWER/CHANGE BUILDING
HUNTLEY PROJECT SCHOOLS**
PRESENTED BY:
US MODULAR, BOZEMAN MT.

ADVANCED MODULAR MANUFACTURING
644 WEST 14600 SOUTH
BLUFFDALE, UTAH, 84065
PH. (801) 571-9841
FAX (801) 571-9883
DRAWN BY: D. EDGINTON
CHECKED BY: THE GHOST



DATE:
JULY 23, 2009

SHEET
5 of 5
USMOD1460HUNTLEY

SCALE:
NONE

ELEVATIONS